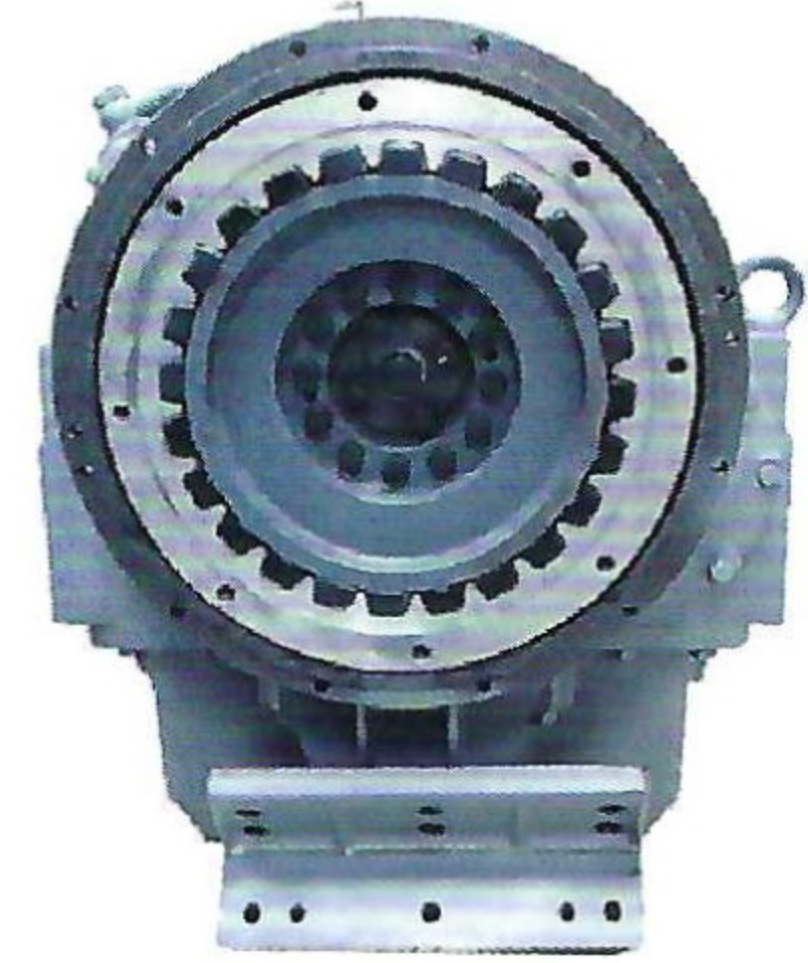
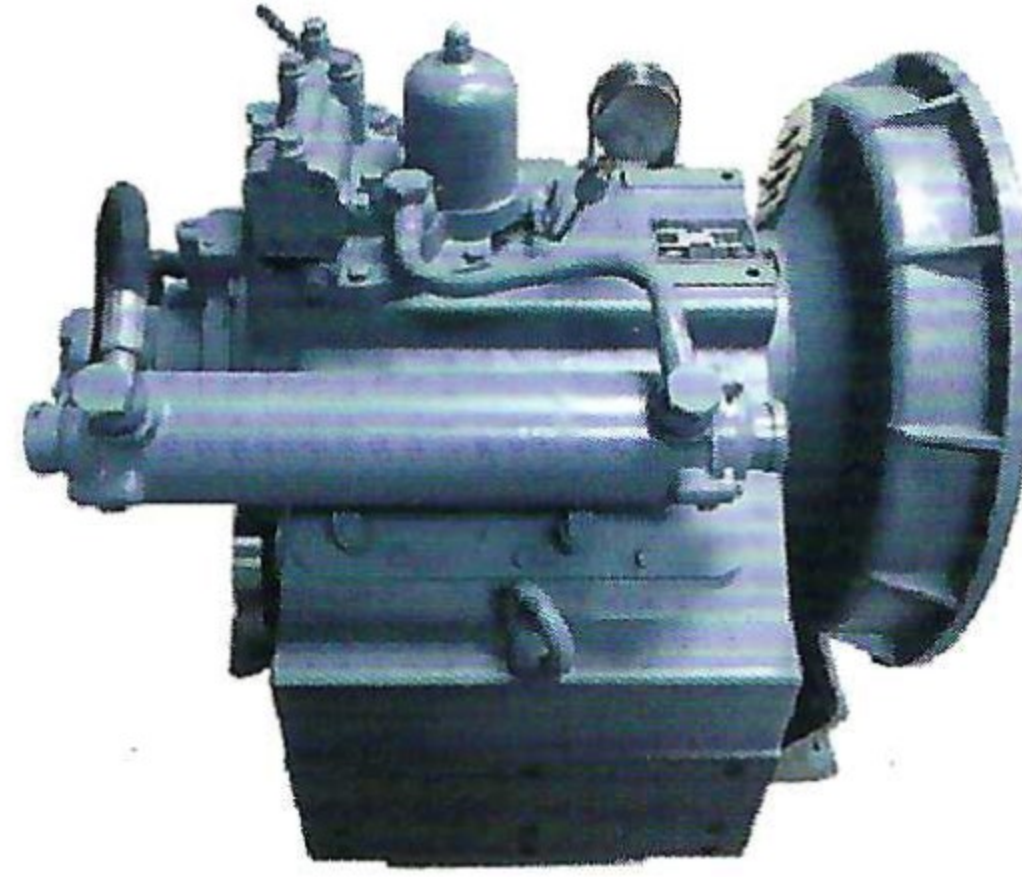
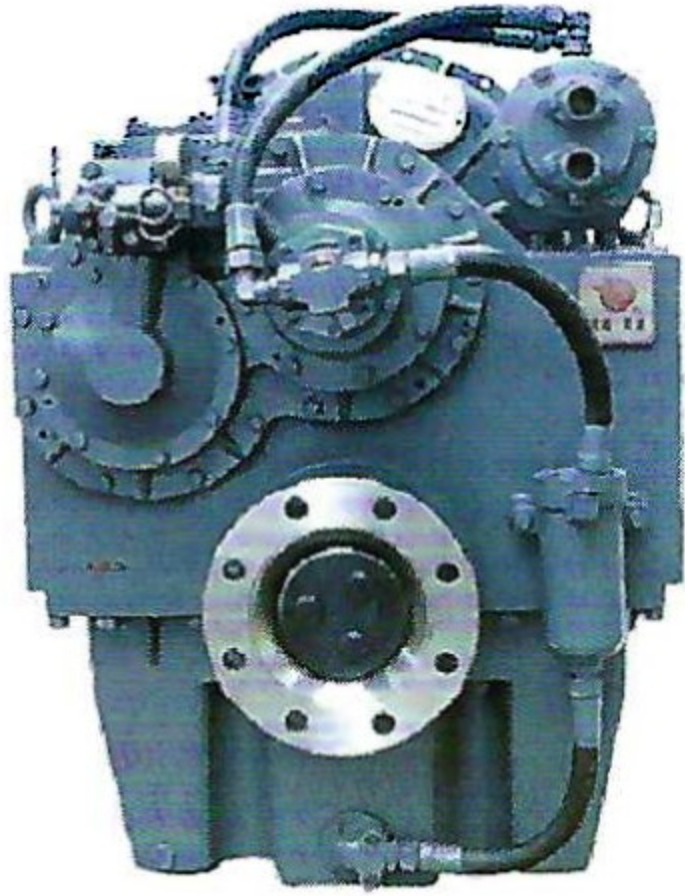


MARINE GEARBOX SELECTION GUIDE

Forward, reverse and clutching are available for the marine gearbox, and it can also reduce speed with stand propeller thrust.

The transfer ability refers to the ratio of the engine continuous power to the rated speed.

The reduction ratio corresponds to the transfer ability, when selected, the reduction ratio should be smaller than the value in the manual.



Model	Engine speed range (r/min)	Reduction Ratio (i)	Transfer ability (kW/rpm)	Rated thrust (KN)	Center Distance (mm)	Size (mm)	Net Weight (kg)	Manipulation form	Flywheel Size	Flywheel housing size
06	1000-2100	2.52, 3.05, 3.50	0.004	1.8	124	350*316*482	58	Manual control	195C	195C
16A	1000-2000	2.07 2.48 2.95 3.35 3.83	0.012	3.5	135	422*325*563	84	Manual control	2105C 395 SAE 11.5 10	2105C 395 SAE 34
26	1000-2500	2.50 3.00 3.50 4.00	0.0199 0.0190 0.0177	5	135	473.5*365*830	92	Manual control	4105C	4105C
MA100	1500-3000	1.60 2.00 2.55 3.11 3.59 3.88	0.009 0.007 0.006	3	100	236*390*420	75	Push-pull flexible shaft	SAE 11.5 10 7.5	SAE 345
MA125	1500-3000	2.03 2.46 3.04 3.57 4.05 4.39 4.70	0.020 0.018 0.016 0.014 0.013 0.011	5.5	125	291*454*485	115	Push-pull flexible shaft	SAE 11.5 10	SAE 234
MA142	1500-3000	1.97 2.52 3.03 3.54 3.95 4.50 5.06 5.47	0.030 0.026 0.023 0.019 0.016 0.013	8.5	142	308*520*540	140	Push-pull flexible shaft	SAE 11.5 10	SAE 23
40A	750-2000	2.07 2.96 3.44	0.0294 0.0235	8.8	142	490*670*620	225	Push-pull flexible shaft, Electronic control	4110C SAE 14 11.5	SAE 123
MB170	1500-2500	1.97 2.52 3.04 3.54 3.96 4.50 5.06 5.47 5.88	0.039 0.031 0.027	16	170	485*610*656	240	Push-pull flexible shaft	4135Ca X6110C SAE 14 11.5 10	4135Ca X6110C SAE 123
120B	750-1800	2.03 2.81 3.73	0.088 0.044	25	190	605*744*770	400	Push-pull flexible shaft, Electronic control	6135Ca 4120 SAE 14	6135Ca 4120 SAE 1
120C	1000-2500	1.36 1.48 1.61 1.94 2.45 2.96 3.35	0.10 0.09 0.08	25	180	432*440*650	225	Push-pull flexible shaft, Electronic control	6135Ca SAE 14 11.5	6135Ca SAE 1 2 3
135	750-2000	2.03 2.59 3.04 3.62 4.11 4.65 5.06 5.47 5.81	0.100 0.093 0.088 0.077 0.070	29.4	225	578*744*830	470	Push-pull flexible shaft, Electronic control	6135Ca SAE 14	6135Ca SAE 1